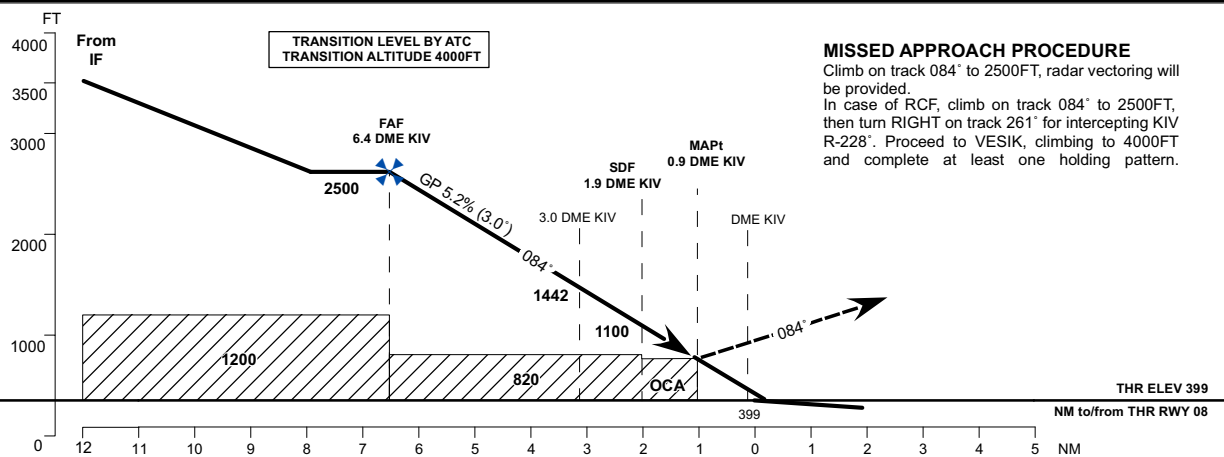
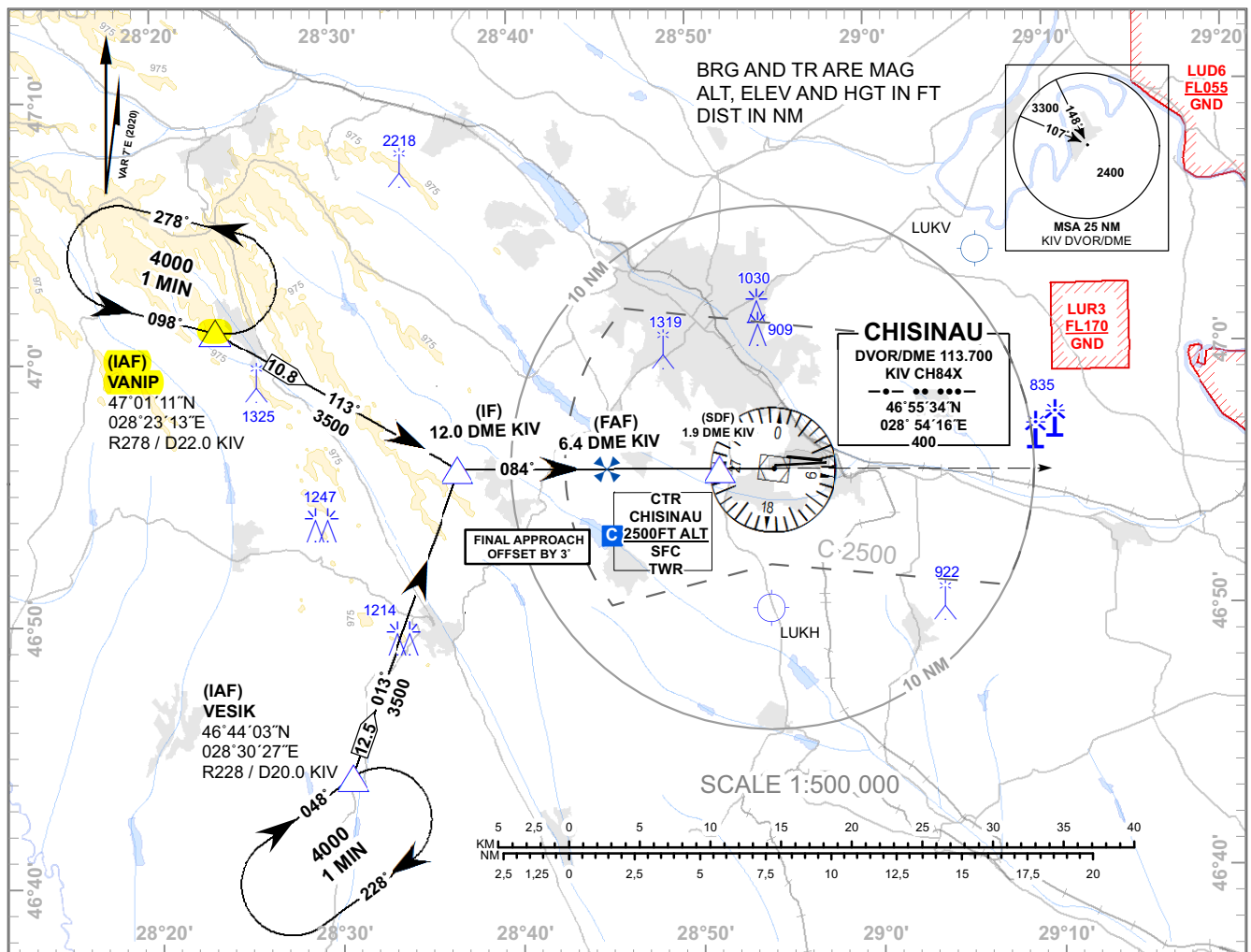


**INSTRUMENT APPROACH  
CHART - ICAO**

 AD ELEV 399 FT  
 HEIGHTS RELATED TO  
 THR RWY 08 ELEV 399 FT

 APP: 133.300 MHz  
 TWR: 118.100 MHz  
 ATIS: 125.225 MHz

**CHISINAU/Intl (LUKK)  
VOR/DME RWY 08**

**MISSED APPROACH PROCEDURE**

Climb on track 084° to 2500FT, radar vectoring will be provided.  
In case of RCF, climb on track 084° to 2500FT, then turn RIGHT on track 261° for intercepting KIV R-228°. Proceed to VESIK, climbing to 4000FT and complete at least one holding pattern.

OCA (OCH)	A	B	C	D
VOR/DME	770 (370)			

DME KIV	7	6	5	4	3	2	1
DIST THR	7.1	6.1	5.1	4.1	3.1	2.1	1.1
ALTITUDE (Height)	2500 (2101)	2392 (1993)	2074 (1675)	1756 (1357)	1437 (1038)	1119 (720)	800 (401)

Timing not Authorized for Defining the MAPt

GS	kt	80	100	120	140	160	180
DISTANCE FAF-MAPt 5.5NM	MIN:SEC	4:08	3:18	2:45	2:21	2:04	1:50
Rate of Descent (5.2%)	FT/MIN	425	531	637	743	849	955

Changes: Table DIST DME KIV Corrected.

INSTRUMENT APPROACH  
CHART - ICAOCHISINAU/Int'l (LUKK)  
VOR/DME RWY 08

AERONAUTICAL DATA TABULATION				
POINT	LATITUDE	LONGITUDE	BEARING GEO° (MAG°)	DISTANCE (NM)
IAF VANIP	470111.0N	0282313.0E	285.00° (278°) KIV	22.00 KIV
IAF VESIK	464403.0N	0283027.0E	235.00° (228°) KIV	20.00 KIV
IF	465544.9N	0283644.7E	091.00° (084°) KIV	12.01 DME KIV
FAF	465540.0N	0284458.1E	091.00° (084°) KIV	6.38 DME KIV
SDF	465535.7N	0285126.2E	091.00° (084°) KIV	1.94 DME KIV
MAPt	465534.6N	0285259.0E	091.00° (084°) KIV	0.88 DME KIV
Final approach descent angle: 3.00°				